

# 7000 FLYBRIDGE



WHITEHAVEN

MOTOR YACHTS

*your journey. your whitehaven.*



**CUSTOMISE. PERSONALISE.**  
**IT'S YOUR JOURNEY, MAKE IT A WHITEHAVEN.**

At Whitehaven, we put you and your experience at the heart of the design process. Being a truly bespoke boat builder we can offer an exceptional level of customization in our class. Every Whitehaven is unique, just like their owners, so let us guide you through the journey of creating your ultimate luxury entertainers motor yacht.







## CLASS LEADING INNOVATIVE DESIGN TAKING THE FLYBRIDGE MARKET TO NEW HEIGHTS

Elegant, and engineered to impress, the Whitehaven 7000 Flybridge is every inch a covetable new-era motor yacht that takes the flybridge concept to the next level. Equally at home in open bluewater as a calm sunset anchorage, the 7000 flybridge offers the perfect balance of engineering for performance and master craftsmanship for luxury aboard.





## EXTERIOR STYLING

From her striking external styling and statement glazing in the hull, to the spacious interior, European-inspired décor and world-class finishes, the 7000 Flybridge surpasses expectations. The Whitehaven 7000 flybridge offers a European inspired cockpit design that delivers tender storage beneath, an abundance of entertaining space above and a seamless flow to the interior. This alfresco area comes complete with barbeque, sink, fridge/freezer as well as generous lounge/dining space.





## INTERIOR LIFESTYLE

The brilliantly designed saloon boasts a freestanding dining table for eight, lounge area, TV and large panoramic windows throughout. The exceptionally appointed aft galley, with full-size appliances, flows out to the spacious entertainer's cockpit. Beautifully hewn timber stairs lead to the flybridge. Much more than a helm – though it certainly is a plush and high-tech skipper's station.



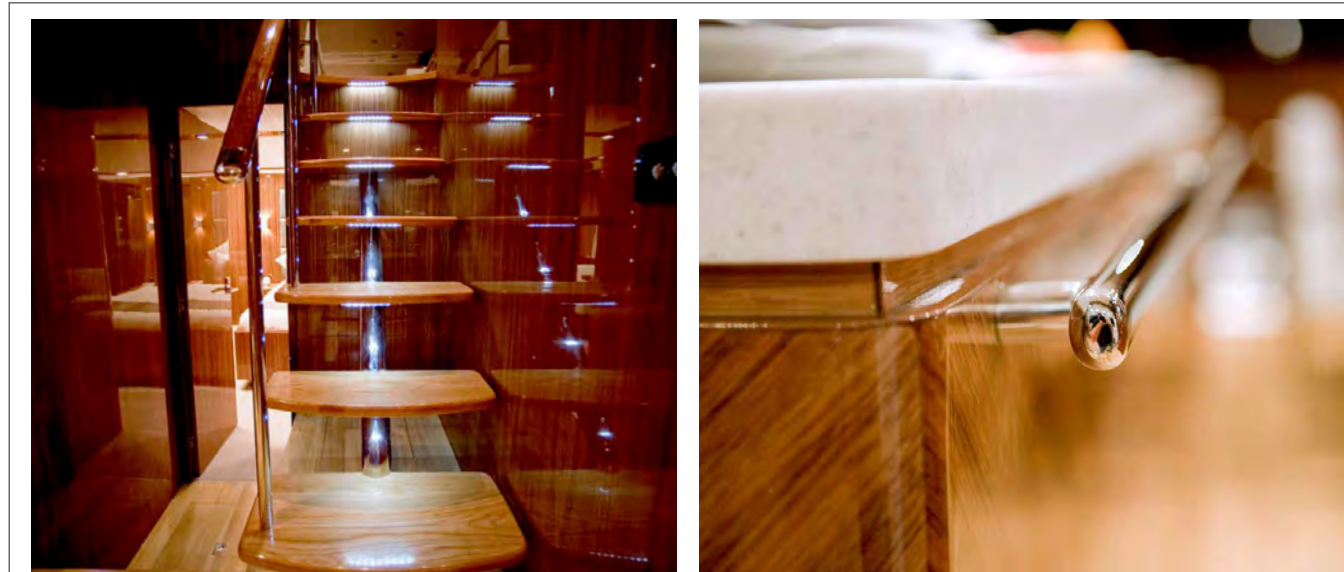




## FLYBRIDGE LIVING

The flybridge on the 7000 has been designed as an additional living and socialising space, complete with lounge and a pleasant aft deck with seating, table, sink and storage. An angler's or sun lover's delight, from here you can see for miles and enjoy the ambience and aspect a flybridge model provides.



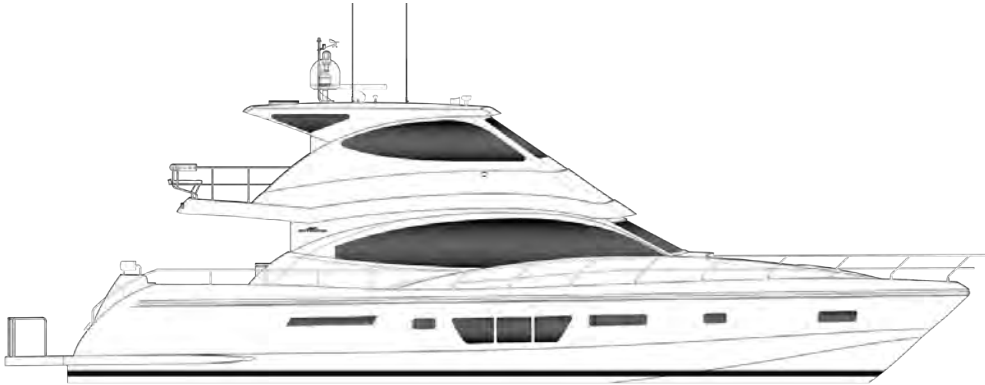


## BELOW DECK

Below decks, accommodation is equally impressive. The full beam master stateroom and adjoining ensuite create a veritable 'oasis at sea', with every luxury owners could envisage – completely customised to your preferences. Generously sized guest cabins ensure your family and friends enjoy an exceptional overnight or extended stay. A fourth cabin is an additional storage or butler's pantry, created specifically for this model and perfect for provisions and gear for long-range cruising.







Standard Bulwark



Optional High Bulwark

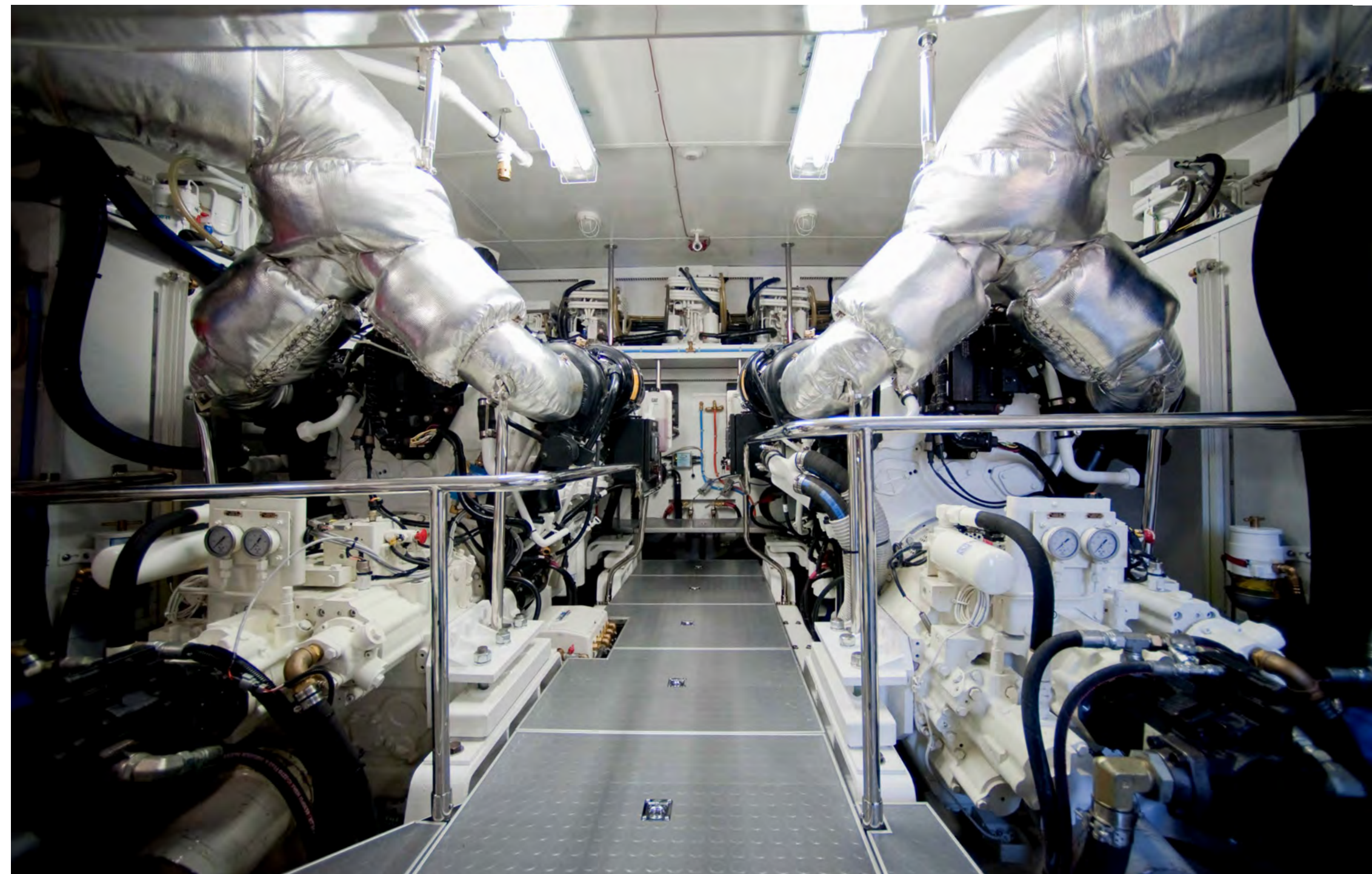
Engines	MAN V8 16.0 LTR. D2868 LE-436 1300mhp with Twindisc or ZF Gearboxes
Length Overall	21.95m / 72'2"
Beam	5.80m / 19'0"
Maximum Draft (approx)	1.67m / 5'6"
Sleeping Capacity	6-8 persons
Fuel Capacity (approx)	7,000 litres
Water Capacity (approx)	1,000 litres
Holding Tank Capacity (approx)	500 litres
Generator	22.5kva





## PERFORMANCE

Continuing the Whitehaven tradition of exceptional sea-keeping ability, the its deep-V hull delivers a smooth and dry journey. Fitted with two powerful MAN V8 16.0 litre engines that each develop 1300 hp, she has the pace to get you to your destination in style.





# 7000 FLYBRIDGE

## CONSTRUCTION

Antifoul x 2 coats and epoxy undercoat x 2 coats
Deep V moulded GRP hull white gelcoat
Hull top sides core reinforced for light weight
Independent compartments and stringer system
Solid hull bottom with chines to waterline
Vinyl ester resin used in first two outer layers of hull
Water tight collision bulkhead forward
Watertight cored bulkheads/flooring
White hull colour standard/inc boot and pin stripe

## MECHANICAL & ELECTRICAL

1 x 120 amp/hr battery for generator 12v maintenance free
2 x 200 amp/hr bow thruster, winch 24v maintenance free
4 x 200 amp/hr engine starting 24v maintenance free
4 x 200 amp/hr for domestic 24v power maintenance free
Acoustic and thermal insulation throughout engine room
Aircon Units Cabin Master 24,000 BTU
Aircon Units Flybridge 48,000 BTU
Aircon Units Fwd VIP 12,000 BTU
Aircon Units Guest stateroom/3rd cabin 9,000 BTU
Aircon Units Saloon 60,000 BTU
All AC power outlets RCD protection (CLIPSAL SATURN)
All batteries fitted in GPR battery boxes
Battery charger 12v 30amp for genset battery
Battery charger 24v 30amp for start bank
Battery charger 24v 100amp for house bank
Battery charger/inverter 220 volt/24 volt 5.0kw
Battery paralleling system for emergency engine start
Bilge pump auto and manual override high water alarms
Bonding system to hull fittings, zinc anode incl. isolator
Bow and Stern thruster 24v, 15 hp with electronic controls to helm
Bronze struts
Dimmer light switches for main light group in saloon, aft deck and flybridge
Electrical panels AC/DC, circuit breakers, volt & amp mtrs
Engine room lighting DC
Fire extinguishing system automatic shut down function
Flooring in engine room non skid synthetic rubber
Fresh water heater (20 gallon) AC 240 volts

Fresh water tap and hose set in engine room
Fuel filters [dual Racor] for main engine [single for genset]
Galvanic isolators x 2
Generator ONAN EQD 22.5kW/50Hz
LED lights for external steps, side deck & foredeck
Lighting throughout LED 24v
Manual bilge pump hand pump from cockpit
Oil change system main engines, gearboxes & generator
Premium bathroom accessories & tap fittings
Propellors 5 blade
Rope lighting under valances in saloon, galley & staterooms
Rudder locking pins
Rudders stainless steel x 2
Searchlight remote
Seawater pump for foredeck and cockpit
Seawater strainers for engines, genset & aircon
Shafts aquamet stainless steel x 2 with dripless PSS seals
Shore power inlet 3 phase incl. shore power lead
Shore power isolation transformer
Steering - Hydraulic power assisted
Tinned electric wiring where applicable coded and labelled
Trim tabs with controls at helm auto retractable
Vacuum flush sanitation system with pump out Sealand
Ventilation system to include 4 x blowers for engine room
Water pressure pump high volume 24v

## MEZZANINE

3 piece sliding stainless frame door to saloon
Aft deck FRP wet bar with sink & locker
Aft deck timber dining table
BBQ flushmount with corian top
Bench seat with cushions and storage under
BOSE Lifestyle system remote from saloon
Emergency hatch on deck with ladder to engine room
Engine and thruster controls
Engine room access door lockable
Flood lights overhead lighting and courtesy DC/24v
Hand held shower (fresh water) hot/cold
Insulation box for cold items at transom behind aftdeck seat
Sink, wet bar including faucet with lid incl gas strut

Stainless steel grab rails
Teak floor
Teak laid swim platform
Wash down tap fresh water
Wash down tap sea water
Tender garage below mezzanine

## DECK

Anchor 60kg ss, 100mtrs of hi-tensile, 13mm inch chain
Anchor winch vertical, foot switches & remote
Bow rail welded stainless (316) with mid safety wire
Channel roller system for double anchor
Cleats stainless steel x 8, Bow x 2, Spring x 4, and Stern x 2
Dia. 1-1/2" stainless steel deck hand rails with stanchions
Escape deck hatch from forward cabin
Exterior courtesy deck lights
Fenders x 4 and dock lines x 4
Foredeck storage box for fenders and ropes
Fwd windscreen in safety glass bonded to FRP frames
Gunwhale stainless steel
Side windows tempered glass to FRP house frame
Stainless steel exterior port holes with screens
Stainless steel swim ladder
Teak mezzanine and swim platform
Wash down tap in anchor locker x 2 fresh and salt

## FLYBRIDGE

Aft station incl. engine controls, thruster controls
Aft flybridge rails incl mid rail
Aircon 48,000 BTU with reverse cycle
Chain counter, Search light remote
Dual chrome plated horn
Flybridge floor amtico throughout with teak externally
Forward window clear tempered windscreen
FRB locker unit with corian counter top, grab rails, control box and storage in fb deck
Full engine controls, compass, anchor winch controls
Full width custom made console for instruments
Hatches x 2 in hardtop fwd/aft with blinds
Helm chairs adjustable pompenette delux tournament x 2

Lighting overhead courtesy and night light LED (red)
Lounge aft facing on aft deck with storage underneath
Lounge with storage underneath and pull out bed
Navigation lights LED
Overhead grab rails
Rear door, hopper window in stainless
Safety monitor panel
Search light fitted to hard top
Stereo
Timber table
Trim tab indicators, fuel gauges, intercom to galley
TV lifter with 40" TV
VHF marine euro 411 icom radio
Wet bar, refrigerator, solid surface counter top & ss sink
Windows side, side sliding, tinted tempered glass
Windscreen wipers x 3 with washers

## SALOON

Airconditioning 60,000 BTU
Amtico flooring
BOSE Lifestyle 35 Stereo system
Dining table with custom made ss legs and seating
Internal staircase to flybridge
Liquor cabinet fridge/icemaker/bottle/glass storage
Lounge L shape with timber coffee table
Tinted glass for saloon window
TV lifter with 40 " TV

## MASTER STATEROOM FULL WIDTH

40" TV mounted on wall
Access to ensuite with full length mirror
Airconditioning 24,000 BTU
Bureau port side, stool, lift up case with make up mirror
Electric bed lifter
King bed, innerspring mattress, drawers and storage
Large size opening viewing port holes both sides
Reading lights, courtesy and overhead lighting DC
Robe hanging rail, drawers, cedar lined, auto lighting DC
Rope lighting under valances
Seating stbd side fwd and aft with timber table
Wool carpet with underlay

## MASTER EN-SUITE

Airconditioning from stateroom
Amtico flooring
Benchtop solid surface with 2 recessed basins
Lighting overhead and vanity DC
Mirror full width
Shower with glass door frameless, tiled feature wall
Stainless steel port hole
Teak slat flooring in shower
Toilet roll holder and accessories
Towel rail x 2
Underbench vanity draw and shelf storage

## STATEROOM VIP FORWARD

32" LED TV and stereo
Airconditioning 12,000 BTU with reverse cycle
Hanging locker stbd cedar lined with auto lighting DC
Port hole x 2 stainless opening
Private ensuite
Queen bed innerspring mattress, drawers and storage
Wool carpet with underlay

## VIP EN-SUITE

Airconditioning from stateroom
Amtico flooring
Benchtop solid surface recessed single basin
Lighting overhead and vanity DC
Shower stall with glass door & teak slat floor
Stainless steel opening port holes
Toilet roll holder, towel holder and accessories
Vanity cabinet with mirror

## GUEST STATEROOM

Air conditioning 9,000 BTU with reverse cycle
Hanging locker cedar lined with auto lighting DC
Hi-Lo bunk in guest cabin or twin bed or double
Porthole opening stainless steel x 2
Wool carpet with underlay

## GUEST EN-SUITE / DAYHEAD

Airconditioning from stateroom
Amtico flooring
Benchtop solid surface recessed single basin
Lighting overhead and vanity DC
Shower stall with glass door & teak slat floor
Stainless steel opening port holes
Toilet roll holder, towel holder and accessories
Vanity cabinet with mirror

## GALLEY

Convection Oven/Microwave
Dishwasher drawer
Induction cooktop 4 burner Miele recessed with lid
Kitchen tidy recessed to galley top
Overhead storage lockers
Pantry
Power Points to run from inverter
Rangehood
Refrigerator upright 2 door incl. water purifier
Solid surface corian benchtop with with lids over ss sinks

## INTERIOR

Walnut, Cherry or Teak wood gloss or satin
Amtico flooring
Blinds or curtains (selected from samples)
Platinum bedhead material to cabins
Ultra Leather headliner covered ceiling with wood trim
Soft Furnishings Package

## UTILITY ROOM/STB SIDE

Amtico flooring
Corian top
Fridge freezer 2 door
Pullout pantry
Stainless steel sink
Washer/dryer combo

## GENERAL

Antifouling 2 x coats exposy undercoat and 2 x coats antifoul
Fenders x 4
Docking lines x 4





## QUALITY, CRAFTSMANSHIP AND WARRANTY

At Whitehaven, we proudly stand behind the finish and performance of our vessels. For your peace of mind, we offer an exceptional 5 year hull and structural and 3 year Whitehaven manufactured item warranty.







OFFICIAL DEALERS FOR WHITEHAVEN MOTOR YACHTS

(02) 8745 8889

[info@australianmarinesales.com.au](mailto:info@australianmarinesales.com.au) | [www.australianmarinesales.com.au](http://www.australianmarinesales.com.au)